

1st Draft: June 10, 2009
2nd Draft: December 22, 2009
3rd Draft: February 15, 2010
4th Draft: July 19, 2011
5th Draft; August 9, 2011

Chapter 2

Demographic Profile

INTRODUCTION

The demographic profile provides an understanding of East Hanover Township's socioeconomic conditions. This is an important component of the comprehensive plan in that it forms a basis upon which to evaluate the Township's existing policies and provides a measure of anticipated growth for which it must plan.

The demographic profile contains data from the U.S. Census Bureau on population, income, and employment. Population projections through the year 2020 are also included. To gain a broader perspective and a measure of comparison, data for the adjoining municipalities, Dauphin County, and the Commonwealth of Pennsylvania are included where appropriate.

POPULATION TRENDS

Population 1970-2007

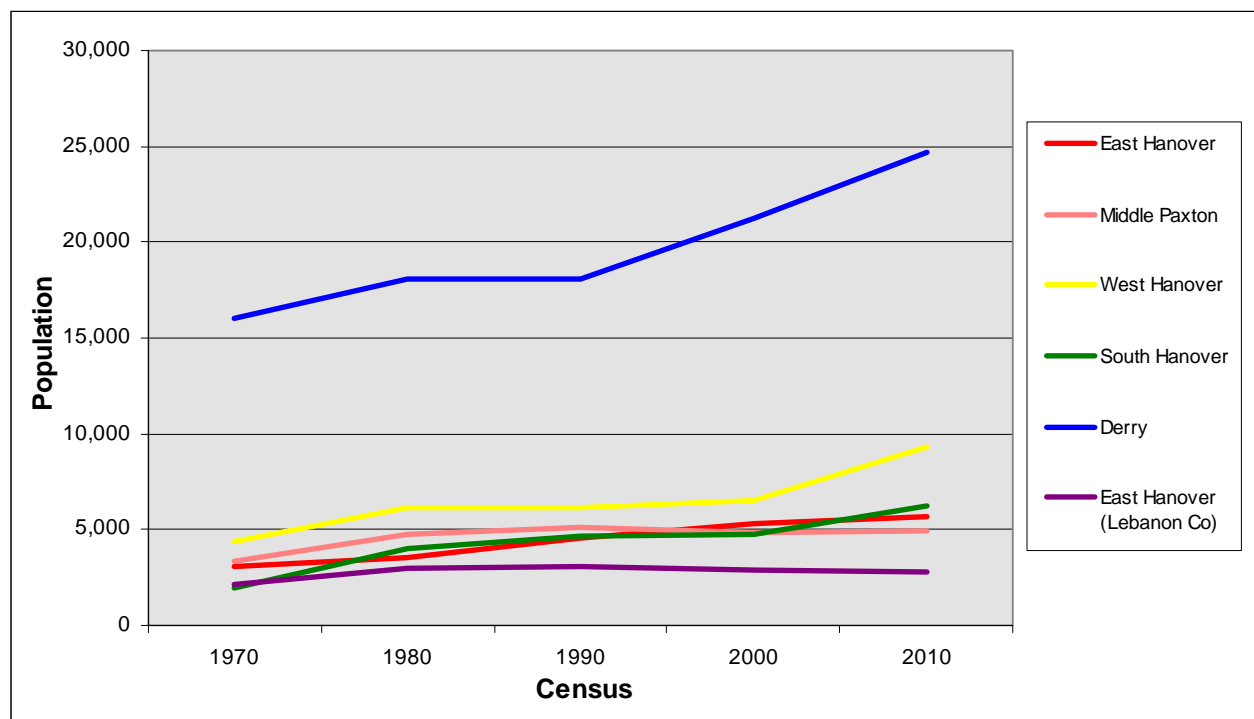
To assess population trends, U.S. Census data from 1970 to 2010 are examined (Table 2.1 and Figure 2.1). Specific findings are as follows:

- The data show large increases in population since 1970 in East Hanover Township and surrounding townships, generally exceeding the growth rates of Dauphin County and Pennsylvania.
- East Hanover Township experienced moderate population growth (16%) from 1970 to 1980. The growth rate then accelerated through

the 1980s reaching 28%. Growth moderated again in the 1990s at 16%. The Township continued to grow from 2000 to 2010, but at a lower rate of growth (7.44%). However, at 7.44% the Township still grew more than the County and the Commonwealth.

- The 2010 Census shows very large population increases in neighboring West Hanover (44%) and South Hanover Townships (30%). Derry Township experienced the largest numerical population growth, which amounted to 16% increase. Both the County and the Commonwealth gained population.

Figure 2.1. Population Trend Lines: 1970 - 2010



Source: U.S. Census Bureau

Table 2.1. Population: 1970 - 2010

Municipality	1970 Census	1980 Census	% Change 1970-1980	1990 Census	% Change 1980-1990	2000 Census	# Change 1990-2000	% Change 1990-2000	2010 Census	# Change 2000-2010	% Change 2000-2010
East Hanover	3,091	3,574	15.63%	4,569	27.84%	5,322	753	16.48%	5,718	396	7.44%
Middle Paxton	3,362	4,745	41.14%	5,129	8.09%	4,823	-306	-5.97%	4,976	153	3.17%
West Hanover	4,407	6,115	38.76%	6,125	0.16%	6,505	380	6.20%	9,343	2,838	43.63%
South Hanover	1,943	4,046	108.23%	4,626	14.34%	4,793	167	3.61%	6,248	1,455	30.36%
Derry	16,045	18,115	12.90%	18,048	-0.37%	21,273	3,225	17.87%	24,679	3,406	16.01%
East Hanover (Lebanon Co)	2,127	2,952	38.79%	3,058	3.59%	2,858	-200	-6.54%	2,801	-57	-1.99%
Dauphin County	223,713	232,317	3.85%	237,813	2.37%	251,798	13,985	5.88%	268,100	16,302	6.47%
Pennsylvania	11,800,766	11,864,751	0.54%	11,881,643	0.14%	12,281,054	399,411	3.36%	12,702,379	421,325	3.43%

Source: U.S. Census Bureau

**Population
Trends by Age**

Population trends are also analyzed by examining changes within age groups occurring between 1990 and 2010 (Table 2.2 and Figure 2.2). Population composition by age shows the current distribution of age groups in the Township (Figure 2.3). These analyses provide insight into which populations in the Township, with respect to age, account for recent population growth and which groups are growing or declining. Based on this information, the Township can begin to consider planning for services for specific population segments such as children and the elderly. Specific findings are as follows:

- From 1990 to 2000, school-aged population (age 5-17 years) in East Hanover Township increased by 34% (Table 2.2). From 2000 to 2010, this age group lost population while the 18 to 20 year age segment gained population (Table 2.3). This trend could be due to individuals in the 5 to 17 year age group aging into the next age segment while not being replenished by a declining young population under 5 years of age.
- East Hanover Township continues to experience declines in its young work force as the number of individuals age 21 to 24 years and 25 to 44 years dropped from 1990 to 2000 and from 2000 to 2010 (Table 2.2 and Table 2.3).
- East Hanover Township is an aging community. In the twenty-year period from 1990 to 2010, the population under 45 years of age experienced a net decrease while the population age 45 years and over experienced an enormous increase (Figure 2.2). The Township's median age grew from 38.1 in 2000 to 43.3 in 2010. Data show that the County and Commonwealth are also aging, but that East Hanover Township is aging more rapidly.
- The decline in population under 45 years of age suggests that young workers and young families are aging out of these categories and are not being replaced by new residents of those age groups. The Township is not retaining its young population possibly due to a lack of employment opportunities and youth leaving for college and not returning home.
- The Township has had a steep increase in the senior population aged 75 to 84 years and 85 years and over (151% and 210% respectively) since 1990. While these groups represent a comparatively small percentage of the overall population their numbers could grow as the population continues to age in place (Figure 2.3).
- Age composition of the Township as of the 2010 Census shows that the largest percentage of the Township population are aged between 24 to 54 years and 5 to 17 years.

Table 2.2 - Population Trends by Age – 1990 to 2000

Age Range	East Hanover				Dauphin County			Pennsylvania		
	1990 Census	2000 Census	# Change 1990-2000	% Change 1990-2000	1990 Census	2000 Census	% Change 1990-2000	1990 Census	2000 Census	% Change 1990-2000
Under 5 years	362	327	-35	-9.67%	16,576	15,490	-6.55%	797,058	727,804	-8.69%
5 -17 years	838	1,123	285	34.01%	39,049	45,623	16.84%	1,997,752	2,194,417	9.84%
18 - 20 years	180	158	-22	-12.22%	8,924	8,012	-10.22%	551,216	516,557	-6.29%
21 - 24 years	200	172	-28	-14.00%	13,233	11,043	-16.55%	675,559	577,892	-14.46%
25 - 44 years	1,710	1,600	-110	-6.43%	79,030	75,753	-4.15%	3,657,323	3,508,562	-4.07%
45 - 54 years	498	910	412	82.73%	24,413	37,479	53.52%	1,213,845	1,705,032	40.47%
55 - 59 years	206	282	76	36.89%	11,064	12,410	12.17%	552,378	619,969	12.24%
60 - 64 years	189	216	27	14.29%	11,512	10,144	-11.88%	607,406	511,656	-15.76%
65 - 74 years	283	325	42	14.84%	19,802	18,667	-5.73%	1,070,021	969,272	-9.42%
75 - 84 years	84	178	94	111.90%	11,041	12,934	17.15%	587,249	712,326	21.30%
85 years & over	19	31	12	63.16%	3,169	4,243	33.89%	171,836	237,567	38.25%

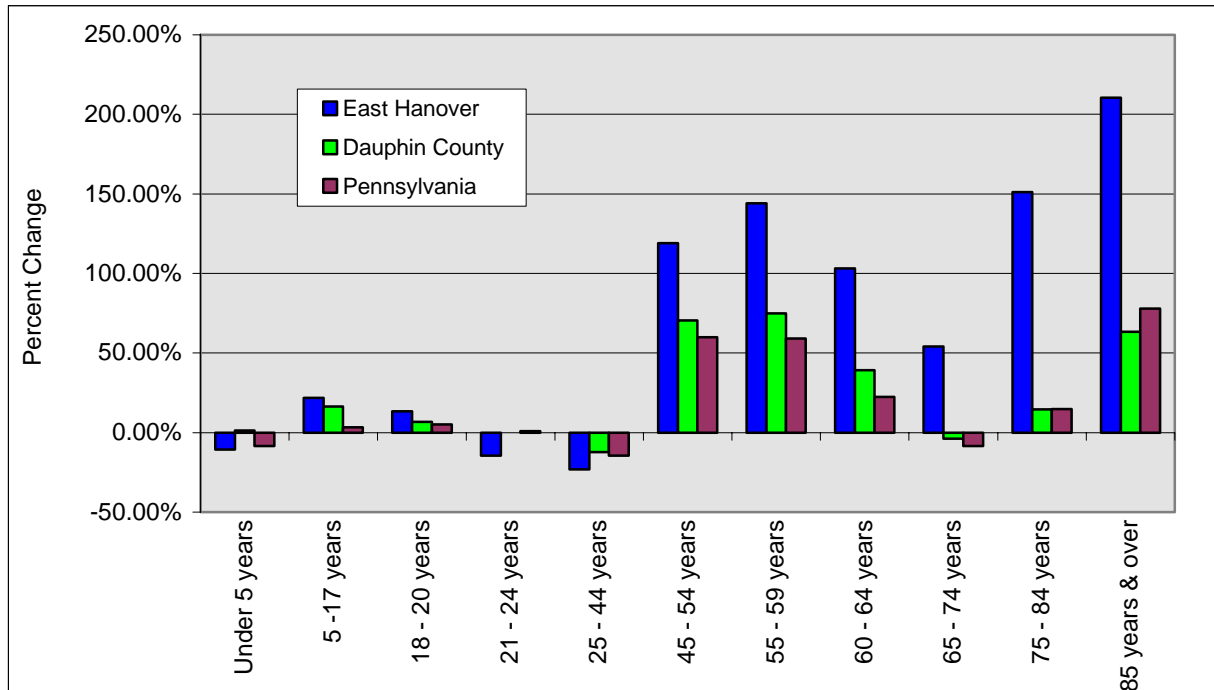
Source: U.S. Census Bureau

Table 2.3 - Population Trends by Age – 2000 to 2010

Age Range	East Hanover				Dauphin County			Pennsylvania		
	2000 Census	2010 Census	# Change 2000-2010	% Change 2000-2010	2000 Census	2010 Census	% Change 2000-2010	2000 Census	2010 Census	% Change 2000-2010
Under 5 years	327	323	-4	-1.22%	15,490	16,794	8.42%	727,804	729,538	0.24%
5 -17 years	1,123	1,021	-102	-9.08%	45,623	45,421	-0.44%	2,194,417	2,062,617	-6.01%
18 - 20 years	158	204	46	29.11%	8,012	9,527	18.91%	516,557	579,177	12.12%
21 - 24 years	172	171	-1	-0.58%	11,043	13,211	19.63%	577,892	682,204	18.05%
25 - 44 years	1,600	1,315	-285	-17.81%	75,753	69,291	-8.53%	3,508,562	3,126,788	-10.88%
45 - 54 years	910	1,091	181	19.89%	37,479	41,647	11.12%	1,705,032	1,940,404	13.80%
55 - 59 years	282	503	221	78.37%	12,410	19,346	55.89%	619,969	879,048	41.79%
60 - 64 years	216	384	168	77.78%	10,144	16,022	57.95%	511,656	743,296	45.27%
65 - 74 years	325	436	111	34.15%	18,667	19,018	1.88%	969,272	979,538	1.06%
75 - 84 years	178	211	33	18.54%	12,934	12,647	-2.22%	712,326	674,093	-5.37%
85 years & over	31	59	28	90.32%	4,243	5,176	21.99%	237,567	305,676	28.67%

Source: U.S. Census Bureau

Figure 2.2 - Population Trends by Age – 1990 to 2010 Percentage Change

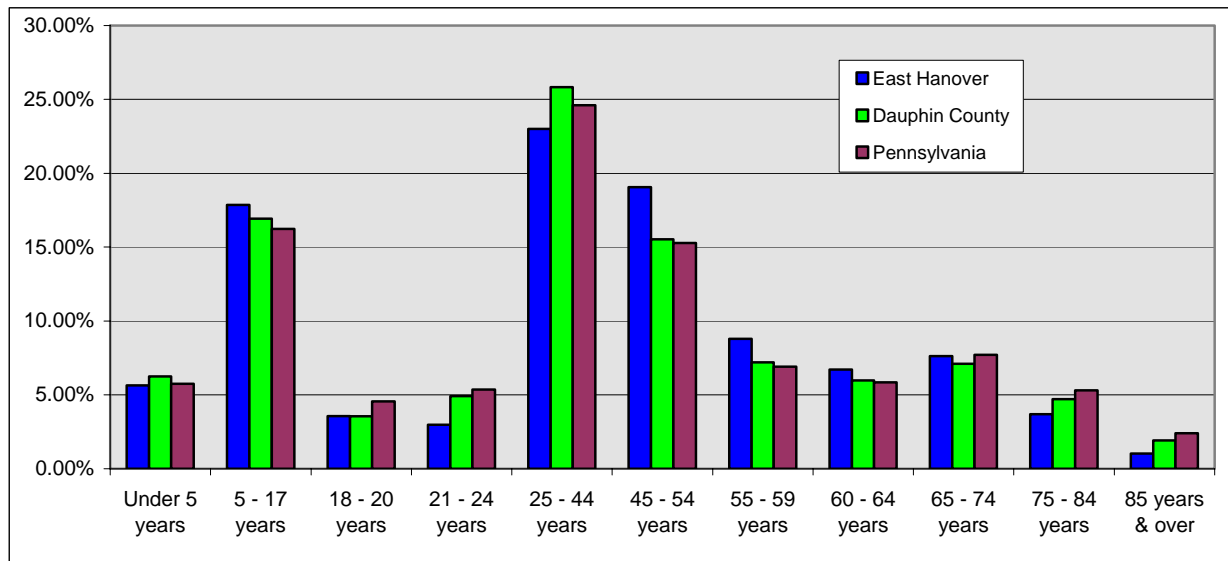


Source: U.S. Census Bureau

Table 2.4 – Population Composition by Age - 2010

Age	East Hanover		Dauphin County		Pennsylvania	
	2010 Census	% of Total	2010 Census	% of Total	2010 Census	% of Total
Total Population	5,718	100%	268,100	100%	12,702,379	100%
Under 5 years	323	5.65%	16,794	6.26%	729,538	5.74%
5 - 17 years	1,021	17.86%	45,421	16.94%	2,062,617	16.24%
18 - 20 years	204	3.57%	9,527	3.55%	579,177	4.56%
21 - 24 years	171	2.99%	13,211	4.93%	682,204	5.37%
25 - 44 years	1,315	23.00%	69,291	25.85%	3,126,788	24.62%
45 - 54 years	1,091	19.08%	41,647	15.53%	1,940,404	15.28%
55 - 59 years	503	8.80%	19,346	7.22%	879,048	6.92%
60 - 64 years	384	6.72%	16,022	5.98%	743,296	5.85%
65 - 74 years	436	7.63%	19,018	7.09%	979,538	7.71%
75 - 84 years	211	3.69%	12,647	4.72%	674,093	5.31%
85 years & over	59	1.03%	5,176	1.93%	305,676	2.41%
Median Age	43.3		39.4		40.1	

Source: U.S. Census Bureau

Figure 2.3 - Population Composition by Age - 2010

Source: U.S. Census Bureau

Population Projections

Population projections represent anticipated future growth for which the Township must be prepared to plan. The reliability of population projections at the small scale of a municipality is suspect since projections may change drastically as the result of economic conditions, a large development project, and other unforeseen factors. Furthermore, different projection methods may yield very different results at this scale. Population projections at the municipal level are therefore intended to serve as a general measure of expected growth.

Three sets of population projections for 2010 and 2020 are presented for comparison. The first is from the Dauphin County Comprehensive Plan and is calculated based on birth and death rates and migration trends (Table 2.5); the second is from the East Hanover Township Land Use Assumptions Report. It is calculated based on the number of building permits for new dwelling units multiplied by an average 2.7 persons per household (from the 2000 Census) (Table 2.6). Results of the two methods are compared in Figure 2.4. Note that at the time these projections were prepared, the 2010 Census population data were not yet available. To evaluate the accuracy of these projections given the new 2010 Census population figures, rate of error was calculated. Thus, the projection figures contained in Tables 2.5 and 2.6 must be viewed with error taken into consideration.

The third projection method incorporates the actual 2010 Census population figure for East Hanover Township. It calculates a linear trend using a least squares method based on decennial census population figures from 1970 through 2010.

Specific findings are as follows:

- Although they differ in their specific results, the three population projection methods demonstrate the same general conclusion: population will increase in East Hanover Township and surrounding municipalities over the next ten years.
- The Dauphin County projections yield the lowest 2020 projections of the three methods, resulting in a total population for East Hanover Township of 6,262 persons (Table 2.5). Note that the actual 2010 Census shows that the County's projection for that year overestimated the population by 2.61%.
- The Land Use Assumptions Report (LUAR) yields higher figures, resulting in 2020 projection that reaches 6,901 persons (Table 2.6). Note that the actual 2010 Census shows that the LUAR projection for that year overestimated the population by 7.47%.
- The linear trend method generates a 2020 projection that is mid-way between the two methods previously discussed. It results in a 2020 population of 6,555 persons, representing a 14.64% increase over the 2010 Census figure (Table 2.7 and Figure 2.4).

Table 2.5 Population Projections – Dauphin County Comprehensive Plan

Municipality	2000	2007	2010	# Change	% Change	2020	# Change	% Change
	Census	Estimate	Projection	2000-2010	2000-2010	Projection	2010-2020	2010-2020
East Hanover	5,322	5,427	5,867	545	10.24%	6,262	395	6.73%
Middle Paxton	4,823	5,027	5,131	308	6.39%	5,353	222	4.33%
West Hanover	6,505	8,760	6,975	470	7.23%	7,315	340	4.87%
South Hanover	4,793	6,198	5,159	366	7.64%	5,424	265	5.14%
Derry	21,273	21,971	22,950	1,677	7.88%	24,164	1,214	5.29%
East Hanover (Lebanon Co)	2,858	3,203	2,946	88	3.08%	3,057	111	3.77%
Dauphin County	251,798	255,710	264,379	12,581	5.00%	273,485	9,106	3.44%

Source: Dauphin County Comprehensive Plan, 2008

Table 2.6 Population Projections – East Hanover Township Land Use Assumptions Report

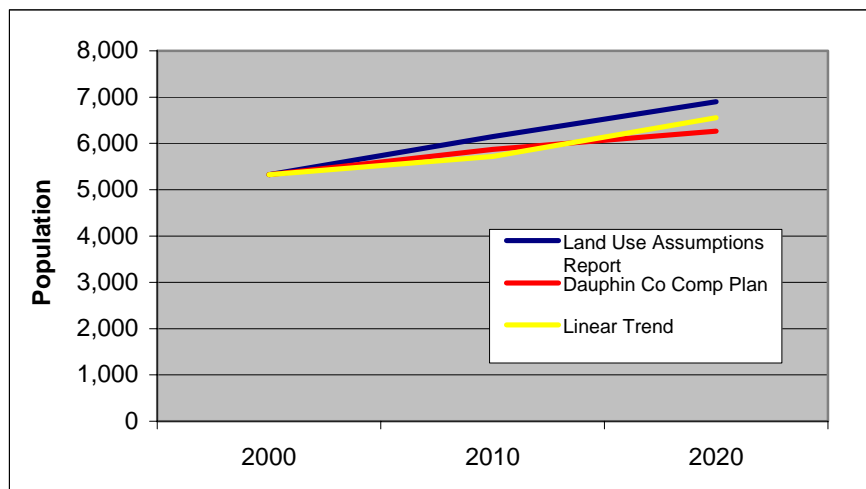
Municipality	2000	2007	2010	# Change	% Change	2020	# Change	% Change
	Census	Estimate	Projection	2000-2010	2000-2010	Projection	2010-2020	2010-2020
East Hanover	5,322	5,427	6,145	823	15.46%	6,901	756	12.30%

Source: East Hanover Township Land Use Assumptions Report, November 2008

Table 2.7 Population Projections – Linear Trend

Municipality	1970	1980	1990	2000	2010	2020	# Change	% Change
	Census	Census	Census	Census	Census	Projection	2010-2020	2010-2020
East Hanover	3,091	3,574	4,569	5,322	5,718	6,555	837	14.64%

Source: Consultant's Analysis

Figure 2.4 Comparison of Population Projections

Sources: Dauphin County Comprehensive Plan, 2008; East Hanover Township Land Use Assumptions Report, November 2008; Consultant's Analysis

SOCIOECONOMIC CHARACTERISTICS

Educational Attainment

Educational attainment is surveyed from among the population aged 25 years and over. It represents the highest level of education reached by individuals of that age group. Data are presented for the East Hanover Township, Dauphin County and Pennsylvania from the 2000 Census and 2009 estimates. Specific findings are as follows:

- The education level of East Hanover Township increased slightly as evidenced by the rise in the percentage of residents having attained a bachelor's degree or higher from 20.8% in 2000 to 22.35% in 2009. However, the percentage increase is lower than that of the County (23.51% to 26.55%) and the Commonwealth (22.35% to 25.97%) (Table 2.8 and Table 2.9).
- Most residents of East Hanover Township have a high school education or less. (Table 2.9 and Figure 2.5).
- 2010 education levels of East Hanover Township residents are generally consistent with, yet slightly lower than, the County and the Commonwealth (Table 2.9).

Table 2.8 - Educational Attainment - 2000

Educational Attainment	East Hanover		Dauphin County		Pennsylvania	
	2000 Census	% of Total	2000 Census	% of Total	2000 Census	% of Total
Population 25 years and over	3524	100%	171,783	100%	8,266,284	100%
Less than 9th grade	202	5.73%	7,940	4.62%	452,069	5.47%
9th to 12th grade, no diploma	368	10.44%	20,607	12.00%	1,044,036	12.63%
High School Graduate	1455	41.29%	64,174	37.36%	3,150,013	38.11%
Some College, no degree	498	14.13%	27,902	16.24%	1,284,731	15.54%
Associate Degree	268	7.60%	10,780	6.28%	487,804	5.90%
Bachelor's Degree	497	14.10%	25,279	14.72%	1,153,383	13.95%
Graduate or Professional Degree	236	6.70%	15,101	8.79%	694,248	8.40%
% high school or higher		83.83%		83.38%		81.90%
% bachelor's degree or higher		20.80%		23.51%		22.35%

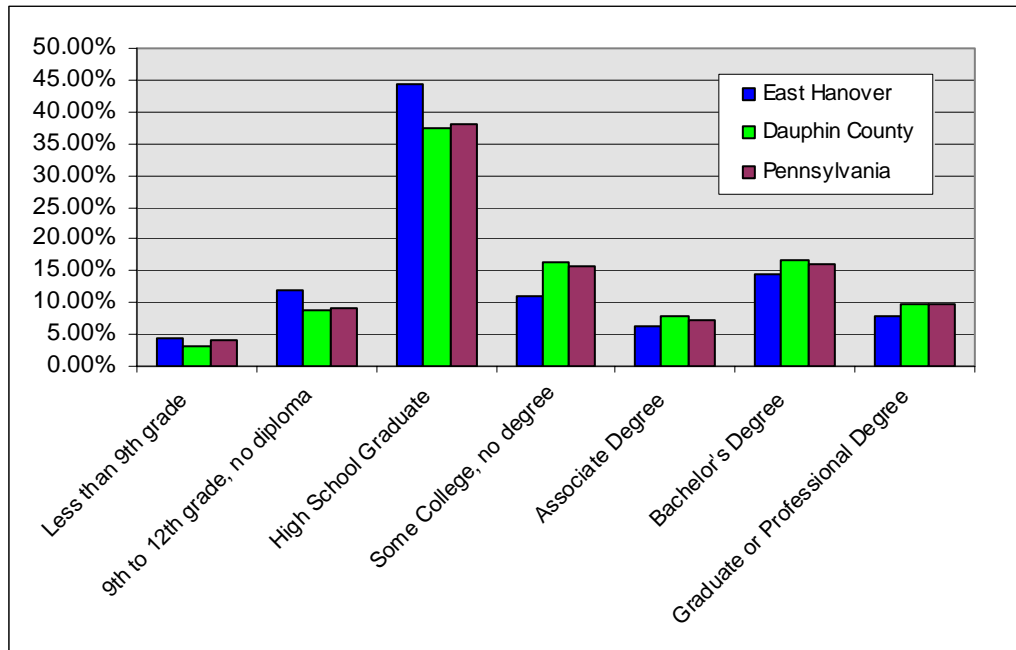
Source: U.S. Census Bureau, 2000

Table 2.9 - Educational Attainment – 2009

Educational Attainment	East Hanover		Dauphin County		Pennsylvania	
	2009 Estimate	% of Total	2009 Estimate	% of Total	2009 Estimate	% of Total
Population 25 years and over	3601	100%	175,426	100%	8,510,688	100%
Less than 9th grade	154	4.28%	5,779	3.29%	347,198	4.08%
9th to 12th grade, no diploma	429	11.91%	15,368	8.76%	770,227	9.05%
High School Graduate	1592	44.21%	65,549	37.37%	3,241,687	38.09%
Some College, no degree	400	11.11%	28,553	16.28%	1,330,018	15.63%
Associate Degree	221	6.14%	13,605	7.76%	611,473	7.18%
Bachelor's Degree	522	14.50%	29,420	16.77%	1,369,063	16.09%
Graduate or Professional Degree	283	7.86%	17,152	9.78%	841,022	9.88%
% high school or higher		83.81%		87.95%		86.87%
% bachelor's degree or higher		22.35%		26.55%		25.97%

Source: American Community Survey, 2011

Source: U.S. Census Bureau, 2000

Figure 2.5 - Educational Attainment – 2009

Source: American Community Survey, 2011

Income

A detailed break down of household income is provided for 2000 and 2009, where the number of households within each income bracket is reported. The 2009 estimates represent inflation adjusted dollars. Household income is used because it is a more inclusive measure than family income since it includes single persons living alone and unrelated persons living together. This provides a more accurate description of the community's economic well-being. Standard measures of income are presented, including median household income, median family income, and per capita income. Data on poverty are also included. Specific findings are as follows:

- Income levels in East Hanover Township have risen as evidenced by the increase in median household, median family and per capita incomes from 2000 to 2009 (Table 2.6 and Table 2.7). However, the increases in East Hanover Township are much smaller than those of the County and the Commonwealth.
- East Hanover Township is a middle- to high-income community with the majority (60%) of households earning more than \$50,000 per year (Table 2.7 and Figure 2.6)).
- 2010 income levels are generally consistent with the County and the Commonwealth. However, the Township exceeds the County and the Commonwealth in the proportion of households earning over \$50,000 at 65%, 51%, and 50%, respectively (Table 2.7 and Figure 2.6).

- In 2000, East Hanover Township's median household income and median family income far exceeded the County and the Commonwealth, and its per capita income was slightly higher (Table 2.6). In 2009, the Township's median household income was still higher, but its median family income was surpassed by the County and the nearly equaled by the Commonwealth (Table 2.7). Its per capita income was surpassed by both the County and the Commonwealth (Table 2.7). This indicates a slowing of income growth in the Township relative to the County and the Commonwealth.
- According to 2009 estimates, the percentage of families in East Hanover Township below poverty level had a substantial increase from 2.1% in 2000 to approximately 7.1% in 2009 (Table 2.6 and Table 2.7). The County and the Commonwealth experienced much smaller increases in the percentage of families below the poverty level. However, one must consider the large margin of error (+/- 4.2%) associated with the Township's 2009 estimate.
- According to 2009 estimates, the percentage of individuals in East Hanover Township below poverty level had a substantial decrease from 11.1% in 2000 to approximately 7.9% in 2009 (Table 2.6 and Table 2.7). At 7.9%, the Township is estimated to have many fewer individuals below the poverty level than the County (11.4%) and the Commonwealth (12.1%). However, one must consider the large margin of error (+/- 3.6%) associated with the Township's 2009 estimate.

Table 2.6 – Household Income - 2000

Household Income	East Hanover		Dauphin County		Pennsylvania	
	2000 Census	% of Total	2000 Census	% of Total	2000 Census	% of Total
# of Households	1,949	100%	102,677	100.00%	4,779,186	100.00%
Less than \$10,000	61	3.13%	8,155	7.94%	465,860	9.75%
\$10,000 - \$14,999	53	2.72%	6,305	6.14%	333,381	6.98%
\$15,000 - \$24,999	183	9.39%	13,602	13.25%	657,266	13.75%
\$25,000 - \$34,999	239	12.26%	14,702	14.32%	633,953	13.26%
\$35,000 - \$49,999	371	19.04%	18,078	17.61%	809,165	16.93%
\$50,000 - \$74,999	495	25.40%	21,201	20.65%	929,863	19.46%
\$75,000 - \$99,999	247	12.67%	10,595	10.32%	457,480	9.57%
\$100,000 - \$149,999	190	9.75%	6,613	6.44%	317,171	6.64%
\$150,000 - \$199,999	83	4.26%	1,689	1.64%	84,173	1.76%
\$200,000 or more	27	1.39%	1,727	1.68%	90,874	1.90%
Median Household Income	\$52,009		\$41,507		\$40,106	
Median Family Income	\$60,674		\$50,974		\$49,184	
Per Capita Income	\$23,296		\$22,134		\$20,880	
Families Below Poverty Level	32	2.10%	4,989	7.5%	250,296	7.8%
Individual Below Poverty Level	164	11.10%	23,706	9.7%	1,304,117	11.0%

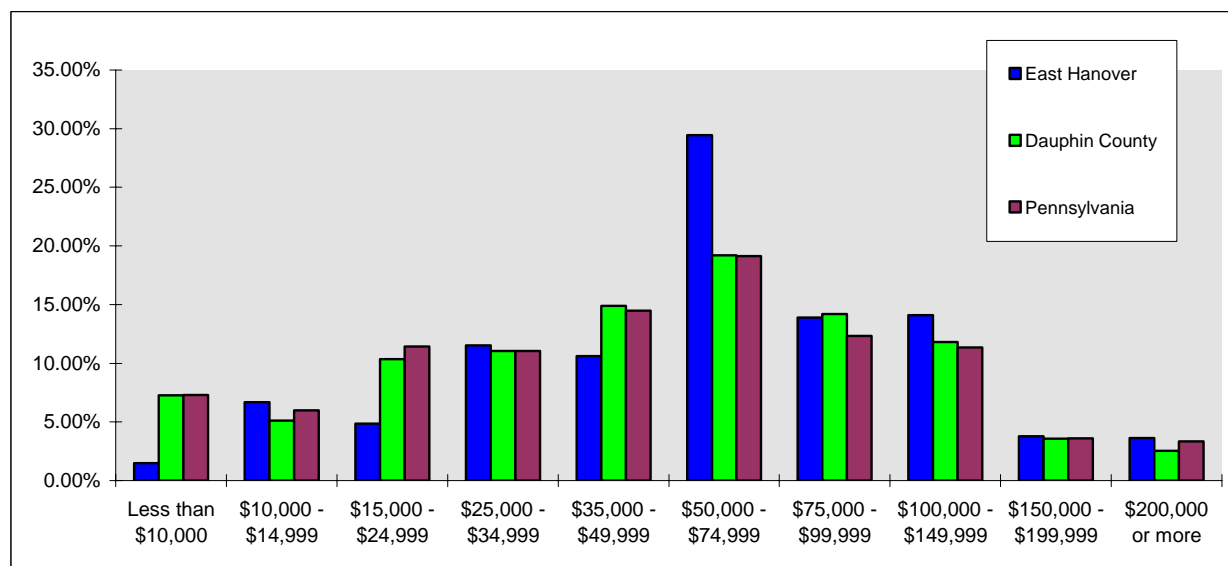
Source: U.S. Census Bureau, 2000

Table 2.7 – Household Income - 2009

Household Income	East Hanover		Dauphin County		Pennsylvania	
	2009 Estimate	% of Total	2009 Estimate	% of Total	2009 Estimate	% of Total
# of Households	1,935	100%	105,259	100.00%	4,893,127	100.00%
Less than \$10,000	29	1.50%	7,646	7.26%	357,193	7.30%
\$10,000 - \$14,999	129	6.67%	5,378	5.11%	293,211	5.99%
\$15,000 - \$24,999	94	4.86%	10,889	10.34%	559,604	11.44%
\$25,000 - \$34,999	223	11.52%	11,617	11.04%	539,808	11.03%
\$35,000 - \$49,999	205	10.59%	15,685	14.90%	708,328	14.48%
\$50,000 - \$74,999	570	29.46%	20,207	19.20%	936,707	19.14%
\$75,000 - \$99,999	269	13.90%	14,949	14.20%	602,849	12.32%
\$100,000 - \$149,999	273	14.11%	12,436	11.81%	555,307	11.35%
\$150,000 - \$199,999	73	3.77%	3,765	3.58%	176,468	3.61%
\$200,000 or more	70	3.62%	2,687	2.55%	163,652	3.34%
Median Household Income	\$58,427		\$51,559		\$49,737	
Median Family Income	\$62,596		\$65,789		\$62,520	
Per Capita Income	\$26,172		\$27,402		\$26,678	
Families Below Poverty Level		7.1% (+/- 4.2%)		8.3% (+/- 0.7%)		8.3% (+/- 0.1%)
Individual Below Poverty Level		7.9% (+/- 3.6%)		11.4% (+/- 0.7%)		12.1% (+/- 0.1%)

Source: American Community Survey, 2011

Figure 2.6 - Income - 2009



Source: U.S. Census Bureau, 2000

Employment Status

Data on employment status are taken from the 2000 Census and 2009 estimates, and updated with current unemployment statistics. The Census data are derived from the population aged 16 years and over. Individuals of this age are legally eligible to work. Those that are in the labor force are classified as either being in the armed forces or in the civilian labor force. Those that are not in the labor force include students,

retired workers, seasonal workers that were surveyed during the off-season institutionalized people, stay-at-home-parents, and people working less than 15 hours **per week** doing incidental, unpaid family work.

- Though East Hanover Township has a higher percentage of population in the work force than the county or the Commonwealth, its percentage from 75% in 2000 to 72% in 2009 while the percentages in the County and the Commonwealth increased. The same occurred with the civilian labor force (Table 2.8 and Table 2.9).
- The percentage of unemployed increased in all jurisdictions (the Township, County and Commonwealth) from 2000 to 2009 (Table 2.8 and Table 2.9).

Table 2.8 - Employment Status - 2000

Employment Status	East Hanover		Dauphin County		Pennsylvania	
	2000 Census	% of Total	2000 Census	% of Total	2000 Census	% of Total
Population 16 years and over	4,064	100%	197,683	100.00%	9,693,040	100.00%
Not in labor force	1,011	24.88%	68,738	34.77%	3,692,528	38.09%
In labor force	3,053	75.12%	128,945	65.23%	6,000,512	61.91%
Armed forces	11	0.27%	334	0.17%	7,626	0.08%
Civilian labor force	3,042	74.85%	128,611	65.06%	5,992,886	61.83%
Employed	2,957	72.76%	122,805	62.12%	5,653,500	58.33%
Unemployed	85	2.09%	5,806	2.94%	339,386	3.50%

Source: U.S. Census Bureau, 2000

Table 2.9 - Employment Status - 2009

Employment Status	East Hanover		Dauphin County		Pennsylvania	
	2009 Estimate	% of Total	2009 Estimate	% of Total	2009 Estimate	% of Total
Population 16 years and over	4,144	100%	204,014	100.00%	10,055,581	100.00%
Not in labor force	1,150	27.75%	65,724	32.22%	3,715,882	36.95%
In labor force	2,994	72.25%	138,290	67.78%	6,339,699	63.05%
Armed forces	0	0.00%	367	0.18%	10,433	0.10%
Civilian labor force	2,994	72.25%	137,923	67.60%	6,329,266	62.94%
Employed	2,891	69.76%	130,257	63.85%	5,901,533	58.69%
Unemployed	103	2.49%	7,666	3.76%	427,733	4.25%

Source: American Community Survey, 2011

Occupation & Industry

Occupation and industry of employment are surveyed from among the population 16 years and over in the civilian labor force. Occupation describes the kind of work the person does on the job. Industry refers to the kind of business conducted by a person's employing organization. These data inform the Township of the skill level and training of its labor force and are related to educational attainment and income levels.

- From 2000 to 2009, the Township saw a reduction in the percentage of individuals in “management, professional and related” occupations (from 33% to 29%) (Table 2.10 and Tale 2.11). These tend to be higher paying occupations held by more highly educated individuals. The county and the Commonwealth experienced increases in this occupation. Lower paying “service” occupations increased from 13% to 18% in East Hanover Township (Table 2.10 and Table 2.11). These shifts in occupation could be related to the slowing of income growth in the Township. “Sales and office” and “construction, extraction, and maintenance” occupations also decreased in the Township during this time period.
- East Hanover Township’s leading occupation is “management, professional and related” occupations (29%), followed by “sales and office” (26%), “production, transportation and material moving (19%), and “service” (18%) (Table 2.11 and Figure 2.7).

Table 2.10 – Occupation - 2000

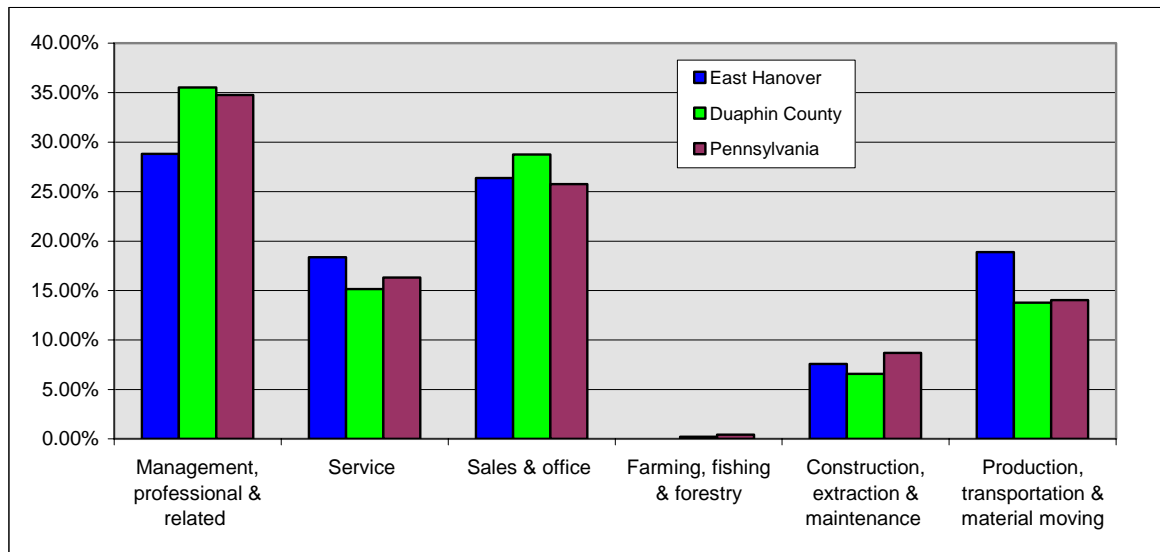
Occupation	East Hanover		Duaphin County		Pennsylvania	
	2000 Census	% of Total	2000 Census	% of Total	2000 Census	% of Total
Employed civilian population 16 years and over	2,957	100%	122,805	100.00%	5,653,500	100.00%
Management, professional & related	969	32.77%	42,833	34.88%	1,841,175	32.57%
Service	385	13.02%	17,254	14.05%	838,137	14.83%
Sales & office	800	27.05%	35,345	28.78%	1,525,131	26.98%
Farming, fishing & forestry	16	0.54%	447	0.36%	26,722	0.47%
Construction, extraction & maintenance	329	11.13%	9,435	7.68%	500,898	8.86%
Production, transportation & material moving	458	15.49%	17,491	14.24%	921,437	16.30%

Source: U.S. Census Bureau, 2000

Table 2.11 – Occupation – 2009

Occupation	East Hanover		Duaphin County		Pennsylvania	
	2009 Estimate	% of Total	2009 Estimate	% of Total	2009 Estimate	% of Total
Employed civilian population 16 years and over	2,891	100%	130,257	100.00%	5,901,533	100.00%
Management, professional & related	833	28.81%	46,275	35.53%	2,052,095	34.77%
Service	531	18.37%	19,734	15.15%	961,713	16.30%
Sales & office	762	26.36%	37,455	28.75%	1,520,308	25.76%
Farming, fishing & forestry	0	0.00%	280	0.21%	25,178	0.43%
Construction, extraction & maintenance	219	7.58%	8,575	6.58%	513,949	8.71%
Production, transportation & material moving	546	18.89%	17,938	13.77%	827,290	14.02%

Source: American Community Survey, 2011

Figure 2.7 – Occupation – 2009

Source: American Community Survey, 2011

- In reference to employment by industry, the Township experienced the largest increases in the “transportation, warehousing and utilities” industry (from 7% in 2000 to 12% in 2009) and the “retail trade” industry (from 12.5% in 2000 to 15% in 2009) (Table 2.12 and Table 2.13). Other industries that had only small increases are “professional, scientific, management, administrative and waste management,” “education, health and social services,” “arts, entertainment, recreation, accommodation and food service,” and “other services.” All other industries had decreases in employment from 2000 to 2009 (Table 2.12 and Table 2.13)
- The leading industries for employment in East Hanover Township are “education, health, and social services” (19.75%); “retail trade” (14.98%) “transportation, warehousing and utilities” (11.93%); and arts, entertainment, accommodation and food service (10.83%) (Table 2.13 and Figure 2.8). Manufacturing slipped from the third largest employer by industry in the Township in 2000 to the fifth largest in 2009 (Table 2.12 and Table 2.13).

Table 2.12 – Employment by Industry – 2000

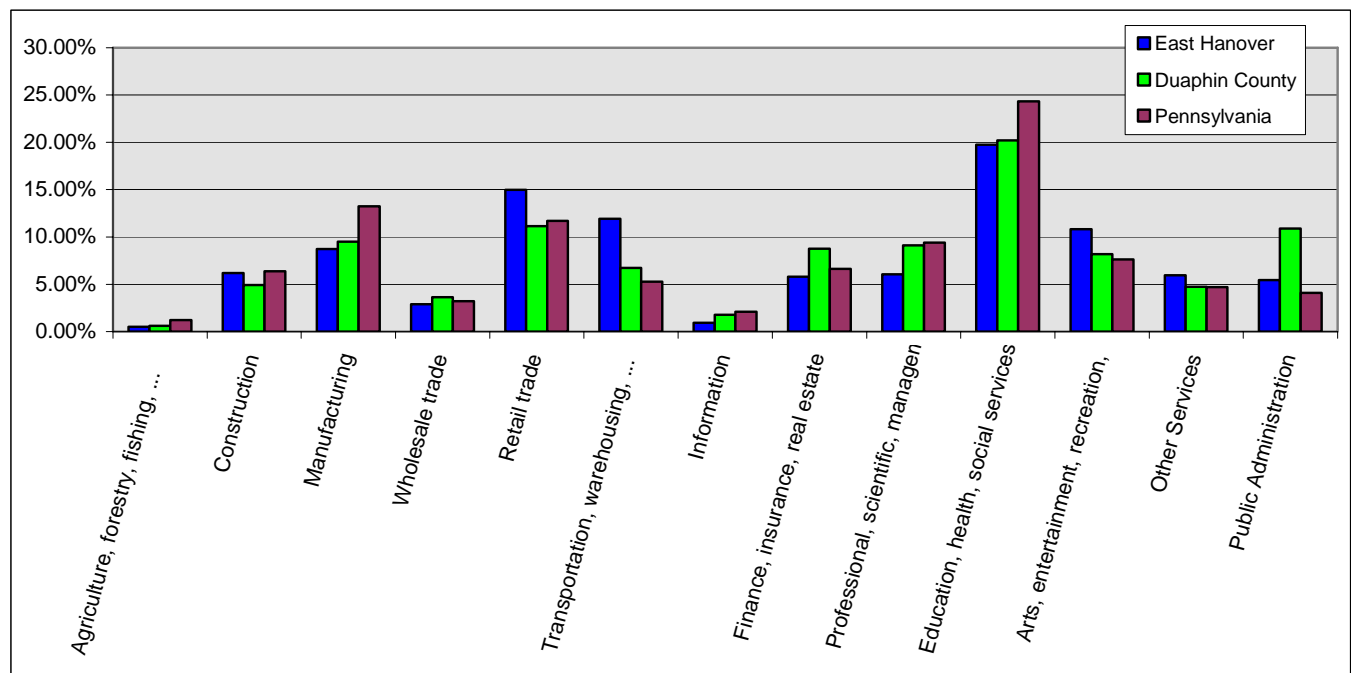
Industry	East Hanover		Duaphin County		Pennsylvania	
	2000 Census	% of Total	2000 Census	% of Total	2000 Census	% of Total
Employed civilian population 16 years and over	2957	100%	122,805	100.00%	5,653,500	100.00%
Agriculture, forestry, fishing, mining	26	0.88%	906	0.74%	73,459	1.30%
Construction	208	7.03%	6,249	5.09%	339,363	6.00%
Manufacturing	356	12.04%	13,604	11.08%	906,398	16.03%
Wholesale trade	126	4.26%	4,536	3.69%	201,084	3.56%
Retail trade	370	12.51%	12,942	10.54%	684,179	12.10%
Transportation, warehousing, utilities	200	6.76%	8,322	6.78%	304,335	5.38%
Information	87	2.94%	3,480	2.83%	148,841	2.63%
Finance, insurance, real estate	197	6.66%	10,245	8.34%	372,148	6.58%
Professional, scientific, management, administrative, waste management	169	5.72%	9,802	7.98%	478,937	8.47%
Education, health, social services	550	18.60%	23,314	18.98%	1,237,090	21.88%
Arts, entertainment, recreation, accomodation, food services	300	10.15%	8,973	7.31%	397,871	7.04%
Other Services	119	4.02%	5,653	4.60%	274,028	4.85%
Public Administration	249	8.42%	14,779	12.03%	235,767	4.17%

Source: U.S. Census Bureau, 2000

Table 2.13 – Employment by Industry - 2009

Industry	East Hanover		Duaphin County		Pennsylvania	
	2009 Estimate	% of Total	2009 Estimate	% of Total	2009 Estimate	% of Total
Employed civilian population 16 years and over	2,891	100%	130,257	100.00%	5,901,533	100.00%
Agriculture, forestry, fishing, mining	15	0.52%	784	0.60%	73,203	1.24%
Construction	179	6.19%	6,401	4.91%	376,777	6.38%
Manufacturing	252	8.72%	12,380	9.50%	781,563	13.24%
Wholesale trade	84	2.91%	4,763	3.66%	190,959	3.24%
Retail trade	433	14.98%	14,527	11.15%	691,148	11.71%
Transportation, warehousing, utilities	345	11.93%	8,770	6.73%	311,251	5.27%
Information	27	0.93%	2,326	1.79%	123,885	2.10%
Finance, insurance, real estate	168	5.81%	11,403	8.75%	392,584	6.65%
Professional, scientific, management, administrative, waste management	175	6.05%	11,870	9.11%	554,720	9.40%
Education, health, social services	571	19.75%	26,331	20.21%	1,435,932	24.33%
Arts, entertainment, recreation, accomodation, food services	313	10.83%	10,675	8.20%	449,930	7.62%
Other Services	172	5.95%	6,188	4.75%	277,333	4.70%
Public Administration	157	5.43%	14,199	10.90%	242,248	4.10%

Source: American Community Survey, 2011

Figure 2.9 – Employment by Industry

Source: U.S. Census Bureau, 2000

PLANNING IMPLICATIONS

Summary

According to the demographic analysis, East Hanover Township is a relatively young but aging, middle-income community comprised largely of families with school aged children. Education levels are falling below those of the County and the Commonwealth and income growth has not kept pace with the County or the Commonwealth as shifts in employment have occurred over the last decade.

Population in the Township and in the neighboring communities has been steadily increasing over the past several decades. However, the data suggest that the Township's population is aging in place and that it is not retaining its young work force aged 18 to 44 years. This could be due to a lack of employment opportunities and youth leaving for college. Efforts to provide employment opportunities may help to retain young workers.

The data also show that the Township's population aged 75 years and over has increased and has the potential to grow if the population continues to age in place. The Township should consider the potential need to provide activities and services for this population.

Each of the three population projection methods suggest that population will continue to increase through 2020. Projections for 2020 range from a total of 6,262 to 6,901 persons, though there is a large magnitude of error

in these figures. A least squares linear projection based on decennial census population figures from 1970 through 2010 results in a 2020 population of 6,555. Despite the range of results, all-methods suggest that the Township can expect continued growth and that planning for this growth is in its best interest. Projections can be updated periodically to monitor growth and ensure that planning strategies are current.

Planning for expected growth involves all aspects of the Comprehensive Plan, including land use, housing, natural and historic resources protection, community facilities and utilities, and transportation. The build-out analysis contained in the Township's Act 537 Plan estimates a potential total of 5,342 residential lots and 756 additional commercial lots in the Township if fully built-out. Projections contained in the Housing Plan yield 289 to 414 new housing units in the Township by 2020. Given this outlook, the Township must identify areas that are most suitable for this level of growth and development and plan for providing necessary utilities, transportation infrastructure, and services. It must also identify areas that are most suited for conservation in order to ensure that water supply, habitat, and natural resources remain functional and sustainable for the long-term.

Demographic trends indicate that the Township might consider enhancing existing community facilities and providing new community facilities that would serve its expanding population. This might include enhancements to the Township's emergency services to ensure that the level of service is sufficient to meet the needs of a growing population. It also includes the provision of social, recreational, and cultural amenities serving families and youth. The Township might also begin to plan for the possibility of an expanding senior and elderly population. Nationwide, this age segment is expected to increase drastically as the Baby Boomers age. This will put enormous strain on services and resources for seniors and the elderly. The Township must closely monitor this trend over the next decade.