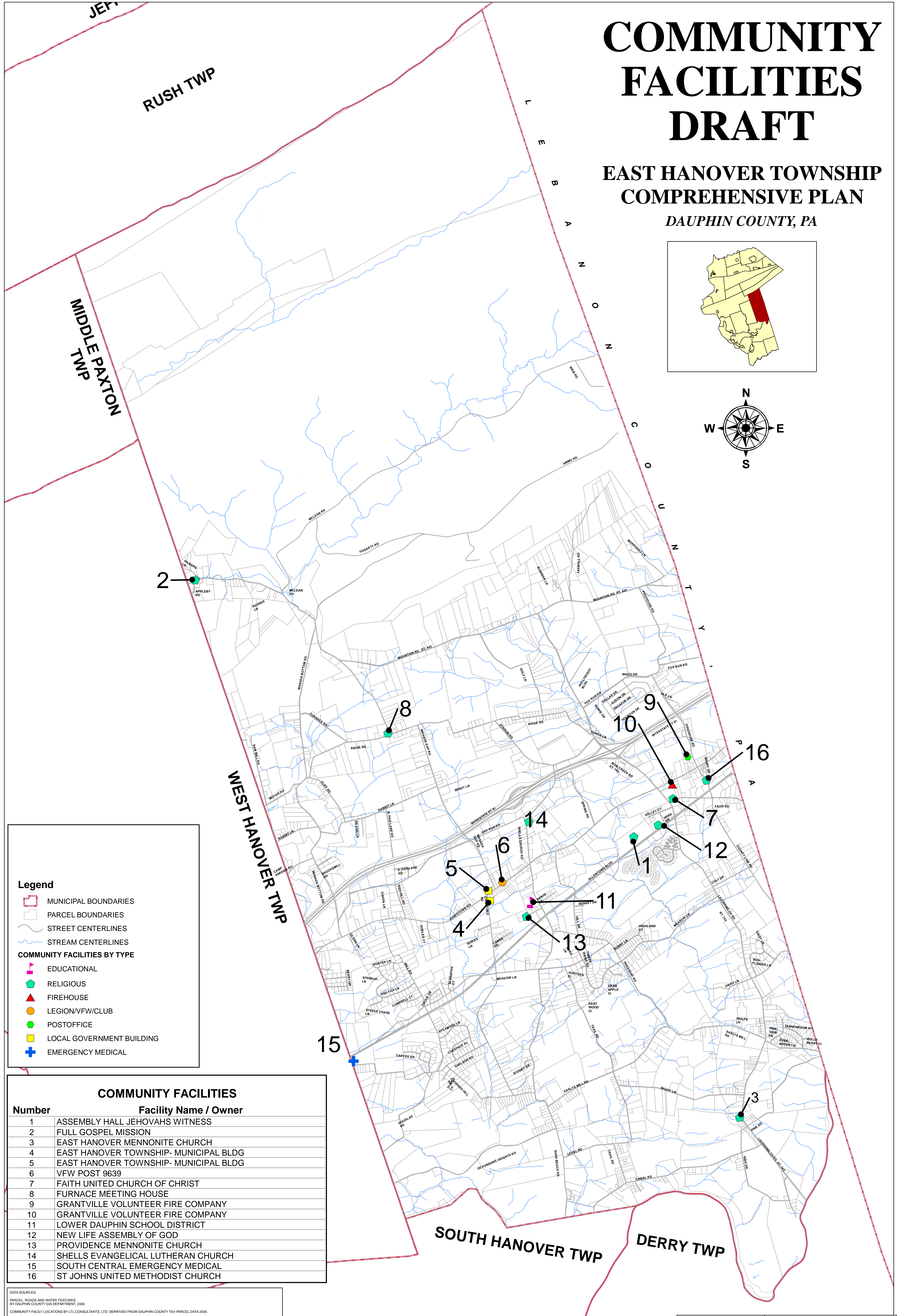
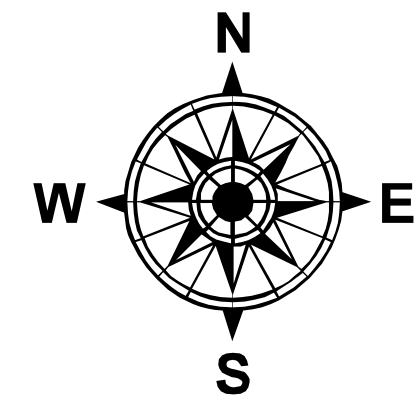
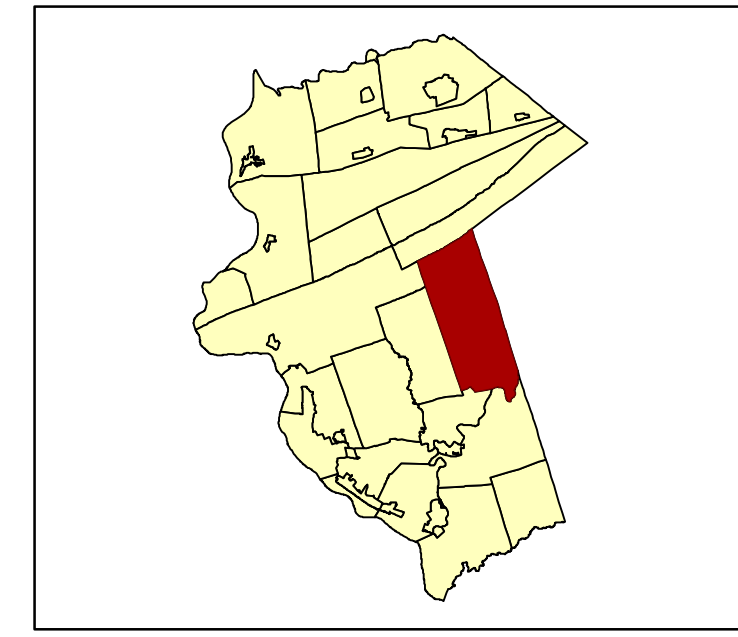


COMMUNITY FACILITIES DRAFT

EAST HANOVER TOWNSHIP COMPREHENSIVE PLAN DAUPHIN COUNTY, PA

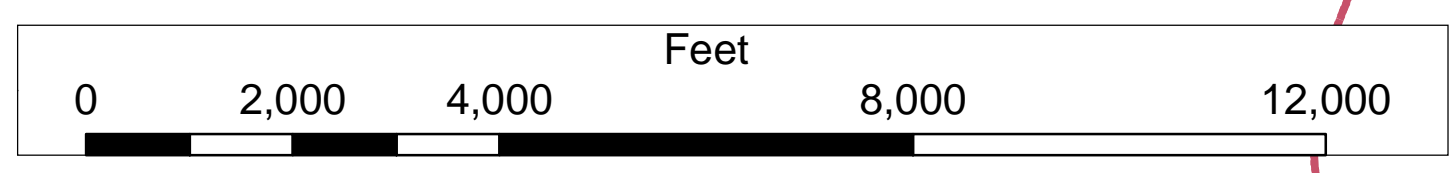


Legend

- MUNICIPAL BOUNDARIES
- PARCEL BOUNDARIES
- STREET CENTERLINES
- STREAM CENTERLINES
- COMMUNITY FACILITIES BY TYPE**
- EDUCATIONAL
- RELIGIOUS
- FIREHOUSE
- LEGION/VFW/CLUB
- POSTOFFICE
- LOCAL GOVERNMENT BUILDING
- EMERGENCY MEDICAL

Number	Facility Name / Owner
1	ASSEMBLY HALL JEHOVAHS WITNESS
2	FULL GOSPEL MISSION
3	EAST HANOVER MENNONITE CHURCH
4	EAST HANOVER TOWNSHIP- MUNICIPAL BLDG
5	EAST HANOVER TOWNSHIP- MUNICIPAL BLDG
6	VFW POST 9639
7	FAITH UNITED CHURCH OF CHRIST
8	FURNACE MEETING HOUSE
9	GRANTVILLE VOLUNTEER FIRE COMPANY
10	GRANTVILLE VOLUNTEER FIRE COMPANY
11	LOWER DAUPHIN SCHOOL DISTRICT
12	NEW LIFE ASSEMBLY OF GOD
13	PROVIDENCE MENNONITE CHURCH
14	SHELLS EVANGELICAL LUTHERAN CHURCH
15	SOUTH CENTRAL EMERGENCY MEDICAL
16	ST JOHNS UNITED METHODIST CHURCH

DATA SOURCES:
 PARCEL, ROADS AND WATER FEATURES
 BY DAUPHIN COUNTY GIS DEPARTMENT, 2008.
 COMMUNITY FACILITY LOCATIONS BY LTL CONSULTANTS, LTD. DERRIVED FROM DAUPHIN COUNTY TAX PARCEL DATA 2008.



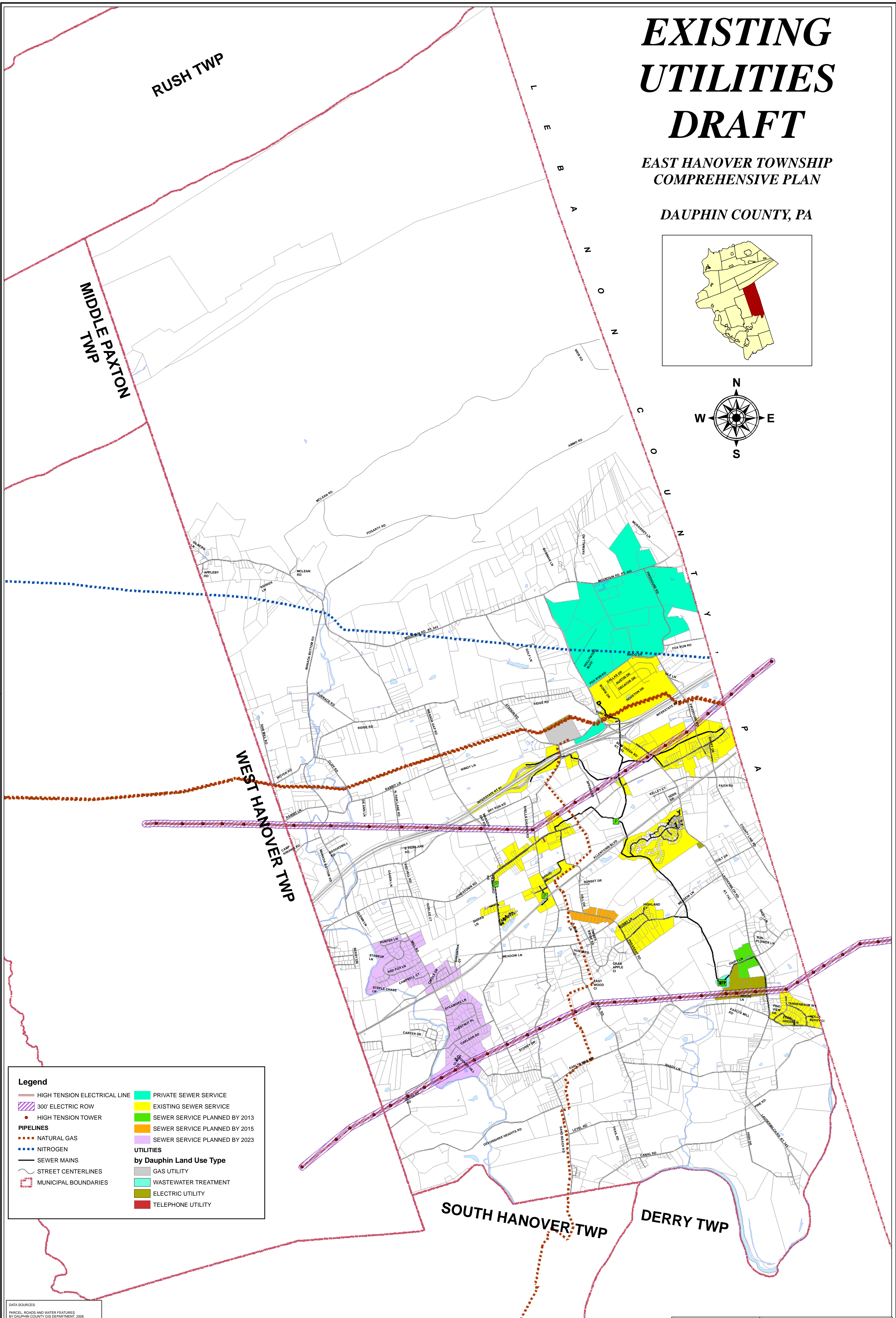
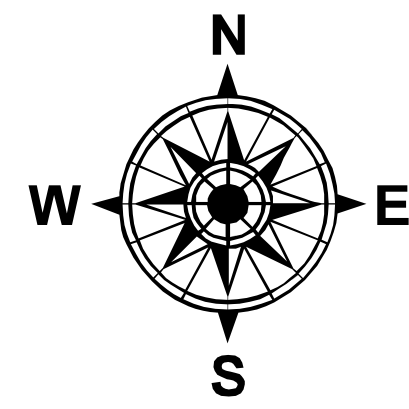
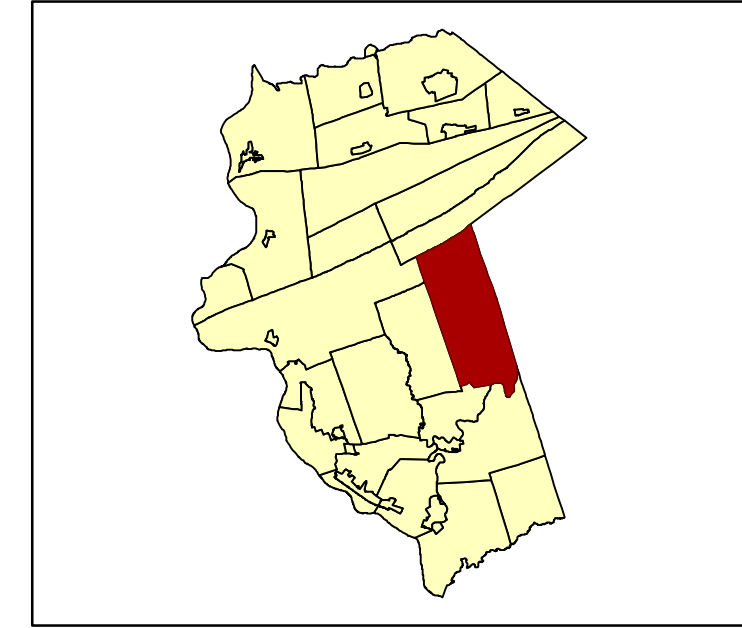
MAP DRAFT NUM
3
 MAP DRAFT DATE
07/12/11
 DRAFTED BY



EXISTING UTILITIES DRAFT

EAST HANOVER TOWNSHIP
COMPREHENSIVE PLAN

DAUPHIN COUNTY, PA



Legend

- HIGH TENSION ELECTRICAL LINE
- ▨ 300' ELECTRIC ROW
- HIGH TENSION TOWER
- PIPELINES
- NATURAL GAS
- NITROGEN
- SEWER MAINS
- STREET CENTERLINES
- ▭ MUNICIPAL BOUNDARIES
- ▭ PRIVATE SEWER SERVICE
- ▭ EXISTING SEWER SERVICE
- ▭ SEWER SERVICE PLANNED BY 2013
- ▭ SEWER SERVICE PLANNED BY 2015
- ▭ SEWER SERVICE PLANNED BY 2023
- UTILITIES
- by Dauphin Land Use Type
- ▭ GAS UTILITY
- ▭ WASTEWATER TREATMENT
- ▭ ELECTRIC UTILITY
- ▭ TELEPHONE UTILITY

DATA SOURCES:
PARCEL, ROADS AND WATER FEATURES BY DAUPHIN COUNTY GIS DEPARTMENT, 2008.
SANITARY SEWER DATA GENERATED BY LTL CONSULTANTS, 2010.
ELECTRICAL UTILITY LINES BY LTL CONSULTANTS BASED ON AERIAL PHOTOGRAPHY 2009.
PIPELINE DATA BY LTL CONSULTANTS BASED ON NIMS DATA AND AERIAL PHOTOGRAPHY 2009.



MAP DRAFT NUM 2	<p>LTL CONSULTANTS, LTD. ENGINEERS & CODE OFFICIALS P.O. BOX 241 ONE TOWN CENTRE DR. OLEVY, PA 15547 (414) 987-9290 FAX: (414) 987-9288</p>
MAP DRAFT DATE 07/12/2011	
DRAFTED BY	