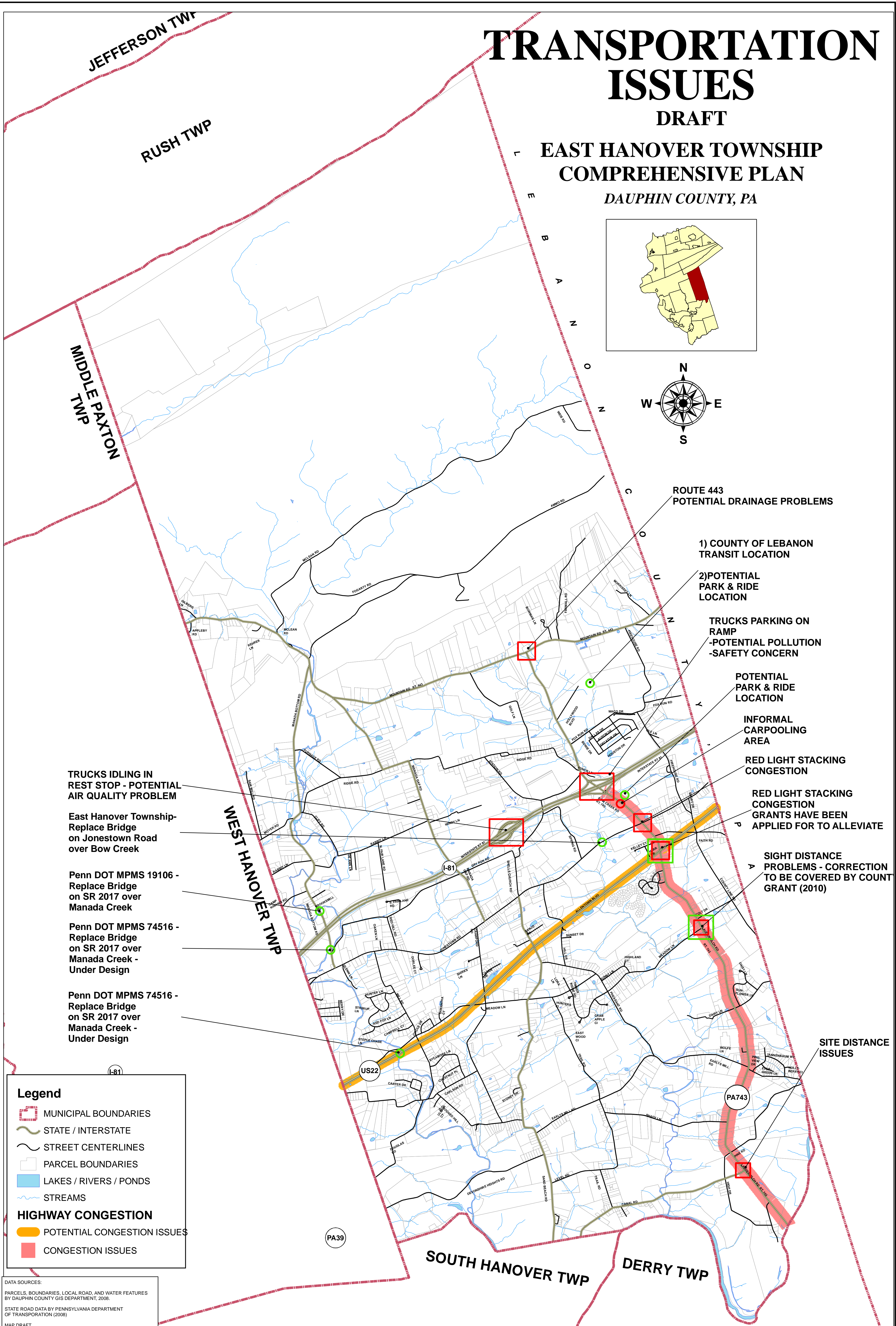
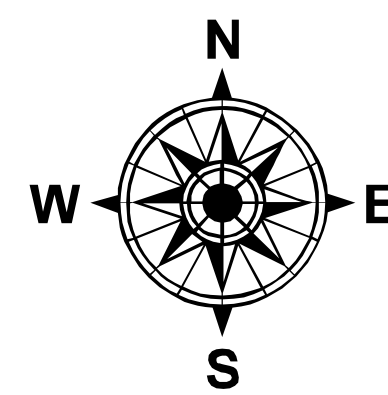
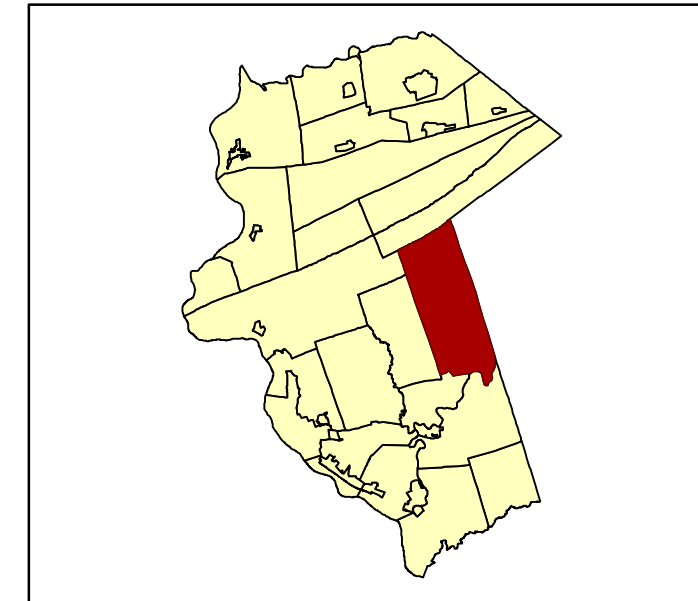


# TRANSPORTATION ISSUES

## DRAFT

### EAST HANOVER TOWNSHIP COMPREHENSIVE PLAN DAUPHIN COUNTY, PA



TRUCKS IDLING IN REST STOP - POTENTIAL AIR QUALITY PROBLEM

East Hanover Township- Replace Bridge on Jonestown Road over Bow Creek

Penn DOT MPMS 19106 - Replace Bridge on SR 2017 over Manada Creek

Penn DOT MPMS 74516 - Replace Bridge on SR 2017 over Manada Creek - Under Design

Penn DOT MPMS 74516 - Replace Bridge on SR 2017 over Manada Creek - Under Design

ROUTE 443 POTENTIAL DRAINAGE PROBLEMS

1) COUNTY OF LEBANON TRANSIT LOCATION

2) POTENTIAL PARK & RIDE LOCATION

TRUCKS PARKING ON RAMP - POTENTIAL POLLUTION - SAFETY CONCERN

POTENTIAL PARK & RIDE LOCATION

INFORMAL CARPOOLING AREA

RED LIGHT STACKING CONGESTION

RED LIGHT STACKING CONGESTION GRANTS HAVE BEEN APPLIED FOR TO ALLEVIATE

SIGHT DISTANCE PROBLEMS - CORRECTION TO BE COVERED BY COUNTY GRANT (2010)

SITE DISTANCE ISSUES

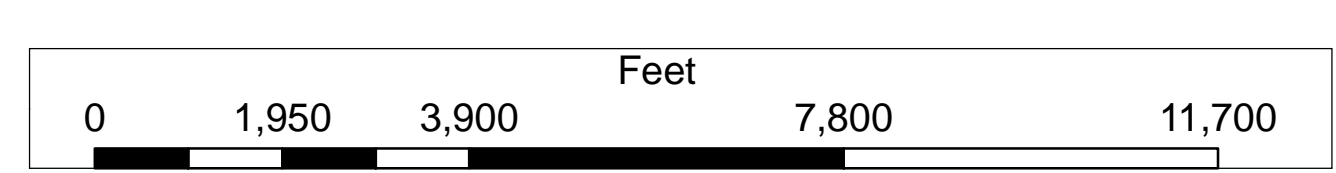
**Legend**

- MUNICIPAL BOUNDARIES
- STATE / INTERSTATE
- STREET CENTERLINES
- PARCEL BOUNDARIES
- LAKES / RIVERS / PONDS
- STREAMS
- HIGHWAY CONGESTION**
- POTENTIAL CONGESTION ISSUES
- CONGESTION ISSUES

**DATA SOURCES:**  
 PARCELS, BOUNDARIES, LOCAL ROAD, AND WATER FEATURES BY DAUPHIN COUNTY GIS DEPARTMENT, 2008.  
 STATE ROAD DATA BY PENNSYLVANIA DEPARTMENT OF TRANSPORTATION (2008)

**MAP DRAFT**  
 This map is in draft format and is not to be used as the official zoning map until approval from East Hanover Township Board of Supervisors.

**MAP USE:**  
 This map is designed for reference use only. LTL Consultants, Ltd. makes no claim to engineering or survey accuracy of the data displayed.



MAP DRAFT NUM 3	 <b>LTL CONSULTANTS, LTD.</b> ENGINEERS & CODE OFFICIALS P.O. BOX 241 ONE TOWN CENTRE DR. OLEVIA, PA 16847 TEL: (814) 987-9200 FAX: (814) 987-9208
MAP DRAFT DATE 07/12/2011	
DRAFTED BY	