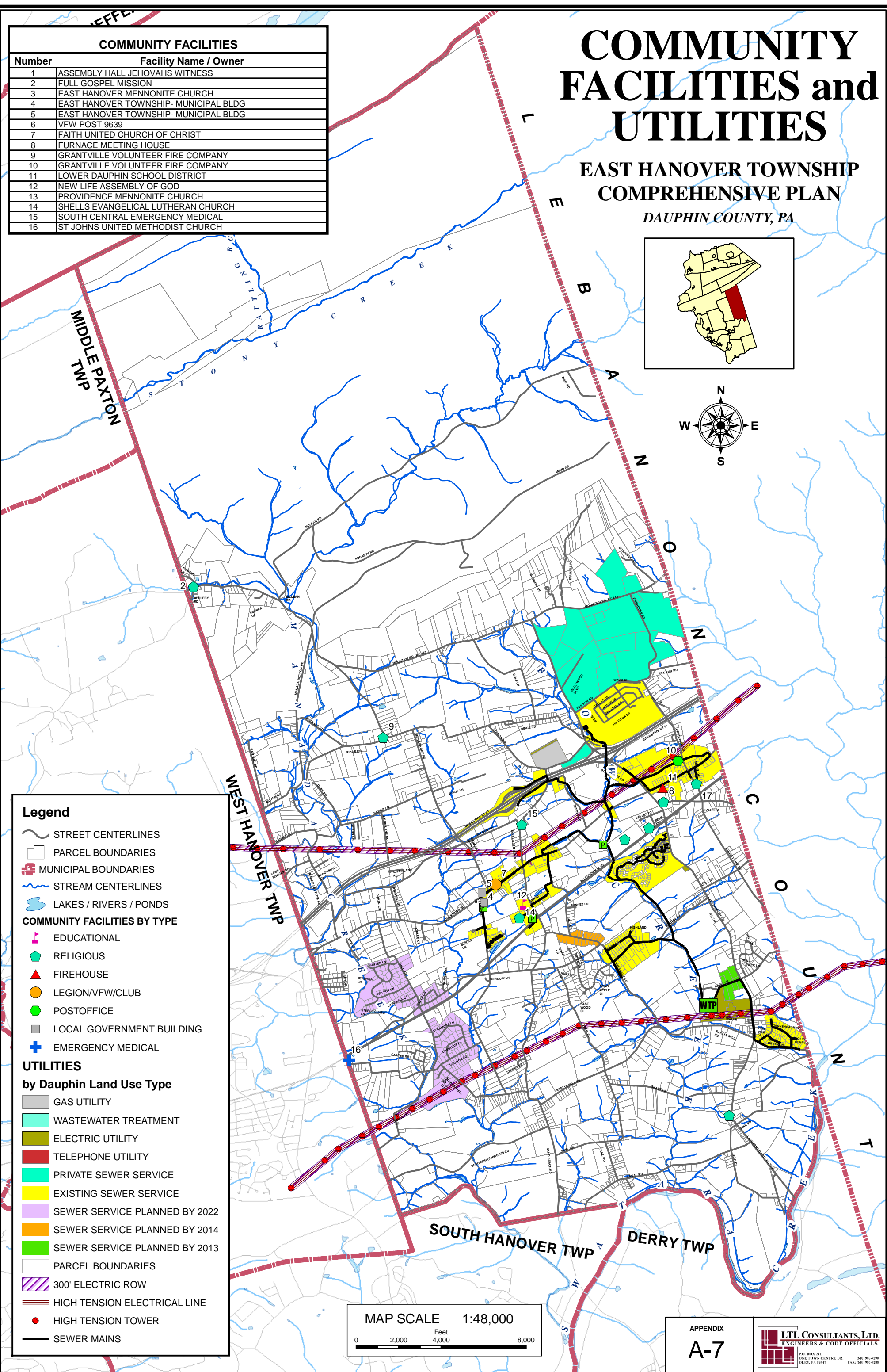
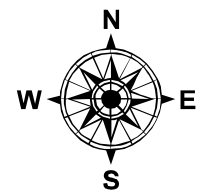
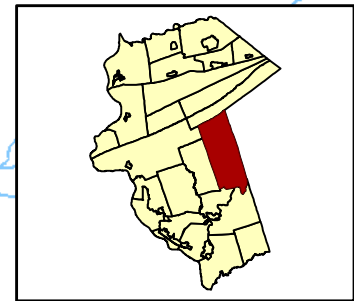


COMMUNITY FACILITIES and UTILITIES

EAST HANOVER TOWNSHIP
COMPREHENSIVE PLAN
DAUPHIN COUNTY, PA

COMMUNITY FACILITIES	
Number	Facility Name / Owner
1	ASSEMBLY HALL JEHOVAHS WITNESS
2	FULL GOSPEL MISSION
3	EAST HANOVER MENNONITE CHURCH
4	EAST HANOVER TOWNSHIP- MUNICIPAL BLDG
5	EAST HANOVER TOWNSHIP- MUNICIPAL BLDG
6	VFW POST 9639
7	FAITH UNITED CHURCH OF CHRIST
8	FURNACE MEETING HOUSE
9	GRANTVILLE VOLUNTEER FIRE COMPANY
10	GRANTVILLE VOLUNTEER FIRE COMPANY
11	LOWER DAUPHIN SCHOOL DISTRICT
12	NEW LIFE ASSEMBLY OF GOD
13	PROVIDENCE MENNONITE CHURCH
14	SHELLS EVANGELICAL LUTHERAN CHURCH
15	SOUTH CENTRAL EMERGENCY MEDICAL
16	ST JOHNS UNITED METHODIST CHURCH



Legend

- STREET CENTERLINES
- PARCEL BOUNDARIES
- MUNICIPAL BOUNDARIES
- STREAM CENTERLINES
- LAKES / RIVERS / PONDS

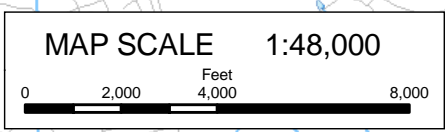
COMMUNITY FACILITIES BY TYPE

- EDUCATIONAL
- RELIGIOUS
- FIREHOUSE
- LEGION/VFW/CLUB
- POSTOFFICE
- LOCAL GOVERNMENT BUILDING
- EMERGENCY MEDICAL

UTILITIES

by Dauphin Land Use Type

- GAS UTILITY
- WASTEWATER TREATMENT
- ELECTRIC UTILITY
- TELEPHONE UTILITY
- PRIVATE SEWER SERVICE
- EXISTING SEWER SERVICE
- SEWER SERVICE PLANNED BY 2022
- SEWER SERVICE PLANNED BY 2014
- SEWER SERVICE PLANNED BY 2013
- PARCEL BOUNDARIES
- 300' ELECTRIC ROW
- HIGH TENSION ELECTRICAL LINE
- HIGH TENSION TOWER
- SEWER MAINS



APPENDIX
A-7

LTL CONSULTANTS, LTD.
ENGINEERS & CODE OFFICIALS

P.O. BOX 241
ONE TOWN CENTRE DR.
DAUPHIN, PA 17827

(610) 967-9299
FAX: (610) 967-9288